

Item No.	10b_supp
Date of Meeting	March 26, 2024

Taxiway A Circuit Replacement (CIP# C801303) Design and Construction Authorization

Seattle-Tacoma
International Airport



Taxiway A Circuit Replacement Request

- Request Commission authorization for the Executive Director to
 - authorize final design and preparation of construction bid documents;
 - advertise, award, and execute a major public works construction contract;
 - procure long lead items;
 - include a Project Labor Agreement for the contract; and
 - authorize use of Port crews for abatement work.
- The amount of this authorization request: \$39,205,000

Project Background and Scope

Project Background

- Taxiway A was constructed in 1987, and centerline lighting has never been reconstructed.
- According to FAA Advisory Circular, any circuit with megger reading below 1 megohm is deemed as “destined for rapid failure”. Taxiway A centerline lighting circuits exhibit signs of distress with megger readings close to 1 megaohm.
- Furthermore, the conduit housing the circuit is corroded, making a cable pull unfeasible.

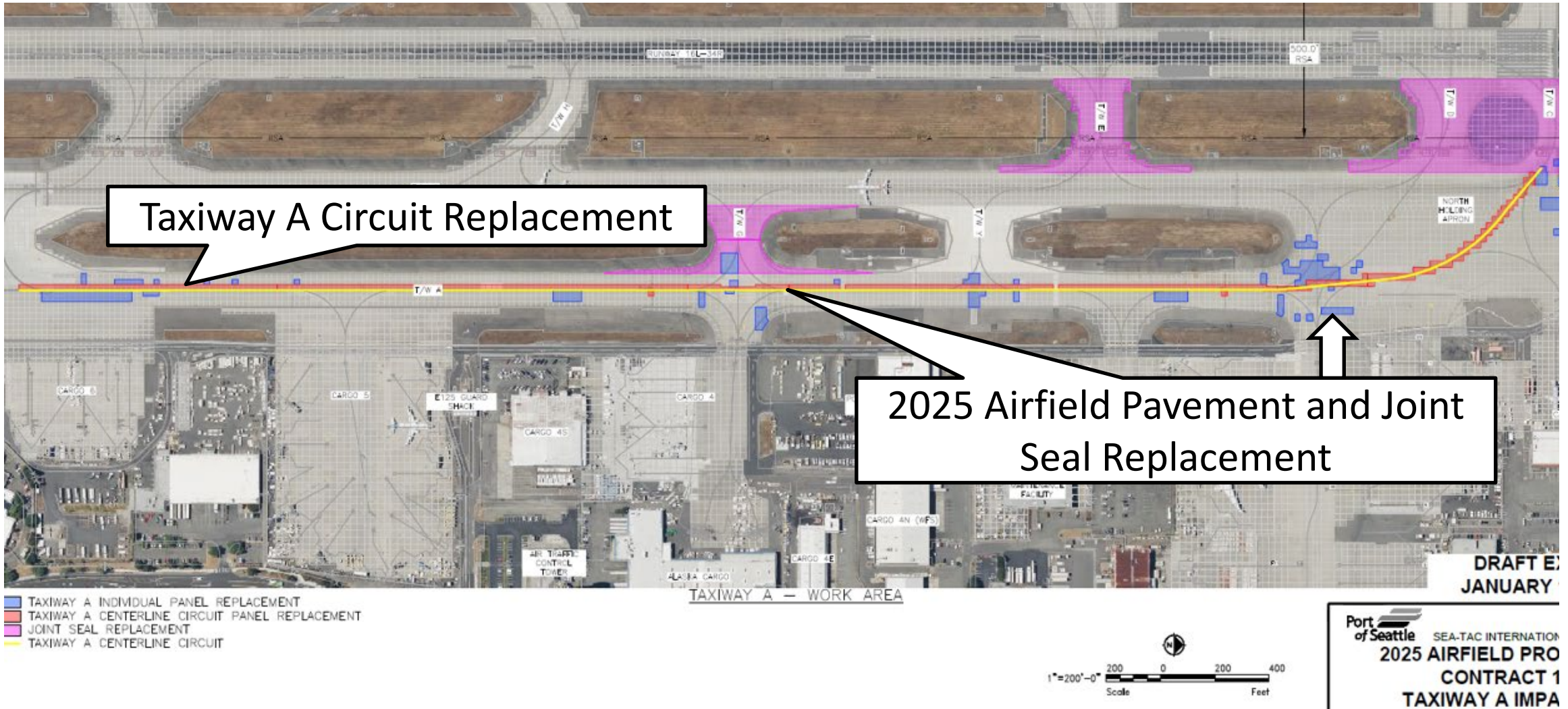
Scope

- This project will install new Taxiway A centerline lighting circuits, LED light fixtures, constant current regulators, PVC conduit, and concrete panels above conduit.

Project Details

- This project will be combined with the 2025 Airfield Pavement and Supporting Infrastructure Replacement Project (CIP# C800930) and 2025 Airfield Utility Improvement Project (CIP# C801177). These projects have overlapping work areas and design functionality, interdependent operational impacts, and share 2025 schedule milestones. As such they were planned, designed, and phased to be delivered concurrently for purposes of Airfield safety, efficiency, and minimization of operational impacts.

Project Diagram



Project Schedule

Schedule	
Design complete	2024 Quarter 4
Construction start	2025 Quarter 1
In-use date	2026 Quarter 1

Project Budget

Cost Breakdown	Amount of this Request	Total Estimated Project Cost
Design	\$6,282,000	\$6,577,000
Construction	\$30,527,000	\$30,527,000
Sales Tax	\$2,396,000	\$2,396,000
Total	\$39,205,000	\$39,500,000

Thank You!



SEA

Seattle-Tacoma
International
Airport

Operated by the
Port of Seattle

FlySEA.org

